

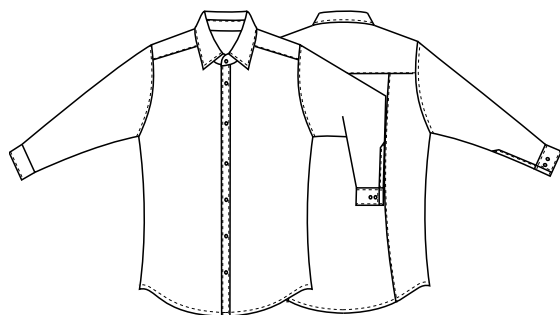
**DETTAGLI**

- Collo classico  
- Polsino regolabile

**TAGLIE**

XS ÷ 5XL  
Slim Fit

76,5 cm



**TESSUTO**

65% poliestere  
35% cotone  
110 g / m<sup>2</sup>

**COLORE**

C01 Bianco

**COLORE**

U32 Nero



Le misure indicate si riferiscono alle taglie **S** per i capi femminili, **L** per i capi maschili. Per i capi a taglia unica le misure indicate sono effettive.

Camicia da uomo realizzata in poliestere cotone easy care per una facile stiratura. Presenta un taglio Slim Fit, polsini regolabili e chiusura frontale con sette bottoni. Disponibile nei colori bianco e in nero.

**COLORI DISPONIBILI**

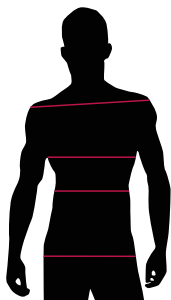


C01 Bianco



U32 Nero

TABELLE TAGLIE  
E CORRISPONDENZE



1  
2  
3  
4

**TABELLA ST-N1 SLIM FIT**

TAGLIA	XS	S	M	L	XL	XXL	XXXL	4XL	5XL
1 - SPALLE									
2 - CIRCONFERENZA TORACE	90-94	95-98	99-102	103-106	107-112	113-120	121-128	129-136	137-147
3 - CIRCONFERENZA VITA	81-85	86-89	90-93	94-97	98-104	105-114	115-124	125-134	135-145
4 - CIRCONFERENZA BACINO	93-97	98-101	102-105	106-109	110-115	116-123	124-131	132-139	140-150

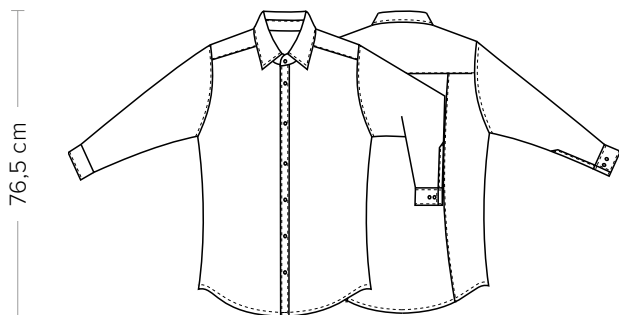
**GUIDA ALLE TAGLIE** **1)** Prendere le misure anatomiche (corpo con abbigliamento intimo) senza stringere mantenendo ben teso il metro. **Nota:** nel caso vogliate indossare dei camici già con dell'abbigliamento sotto prendete le misure già abbigliati. **2)** Nel caso tra le misure prese vi fosse una misura a cavallo fra 2 taglie vi consigliamo di prendere quella più grande. **3)** Le misure della tabella sono espresse in centimetri.

**DETAILS**

- Classic collar
- Adjustable cuff

**SIZES**

XS ÷ 5XL  
Slim Fit



**FABRIC**

65% polyester  
35% cotton  
110 g / m<sup>2</sup>

**COLOURS**

C01 White

**COLOURS**

U32 Black



The measures indicated refer to sizes **S** for women, **L** for men. For one-size-fits-all garments, the measurements indicated are effective.

Men's shirt made of easy-care polyester cotton for easy ironing. It has a Slim Fit, adjustable cuffs and a front fastening with seven buttons. Available in white and black.

**AVAILABLE COLOURS**

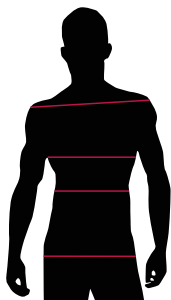


C01 White



U32 Black

**SIZE TABLES AND CORRESPONDENCES**



1  
2  
3  
4

TABLE ST-NI	SLIM FIT									
SIZE	XS	S	M	L	XL	XXL	XXXL	4XL	5XL	
1 - SHOULDERS										
2 - CHEST	90-94	95-98	99-102	103-106	107-112	113-120	121-128	129-136	137-147	
3 - WAIST	81-85	86-89	90-93	94-97	98-104	105-114	115-124	125-134	135-145	
4 - HIPS	93-97	98-101	102-105	106-109	110-115	116-123	124-131	132-139	140-150	

**SIZE GUIDE** **1)** Take the anatomical measurements (body with underwear) without tightening, keeping the measuring tape taut. Note: in case you want to wear of the gowns already with the clothing underneath take the measurements already dressed. **2)** If there is a measure between 2 sizes between the measurements taken, we advise you to take the bigger one. **3)** The measurements in the table are expressed in centimeters.